

# ***SUMMIT INTERNATIONAL, CANADA***

## ***CARPET AND FLOORING SOURCE***



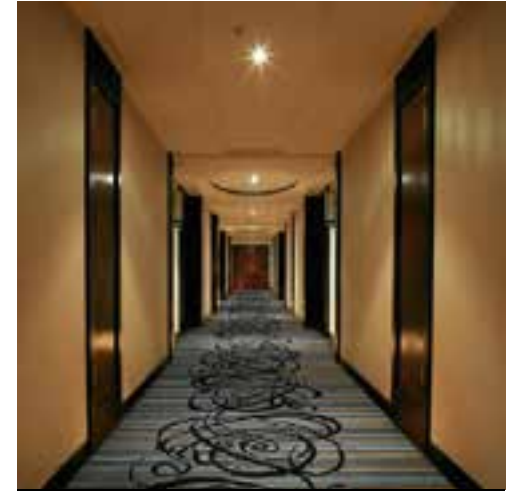
**Established 1974 - Pickering, ON**



## Company Overview

Summit International was established in 1974 working with Interior Designers, Architects and Space Planners to create solid performing carpet products for Commercial, Institutional and Hospitality use.

Summit not only has specification control over the Canadian market, but we also have the capability of maintaining specifications in Europe, the Far East and other Foreign Markets.



35 Mariner Terrace – Toronto, ON



Clair Hills Retirement – Waterloo, ON

# COMMERCIAL

Summit carries a wide range of running line products as well as having the capability of making many custom products including:

- Cut or Loop Pile
- Combination Cut & Loop Pattern
- Computer Graphics
- Computer Yarn Plant/Colour Point
- Dye Injection Printing
- Custom Backing Systems
- 12' - 15' Goods for Corridors
- Wool & Wool Blends





# HARD SURFACE

Laminate

Hardwood

Luxury Vinyl Tile

Luxury Vinyl Plank

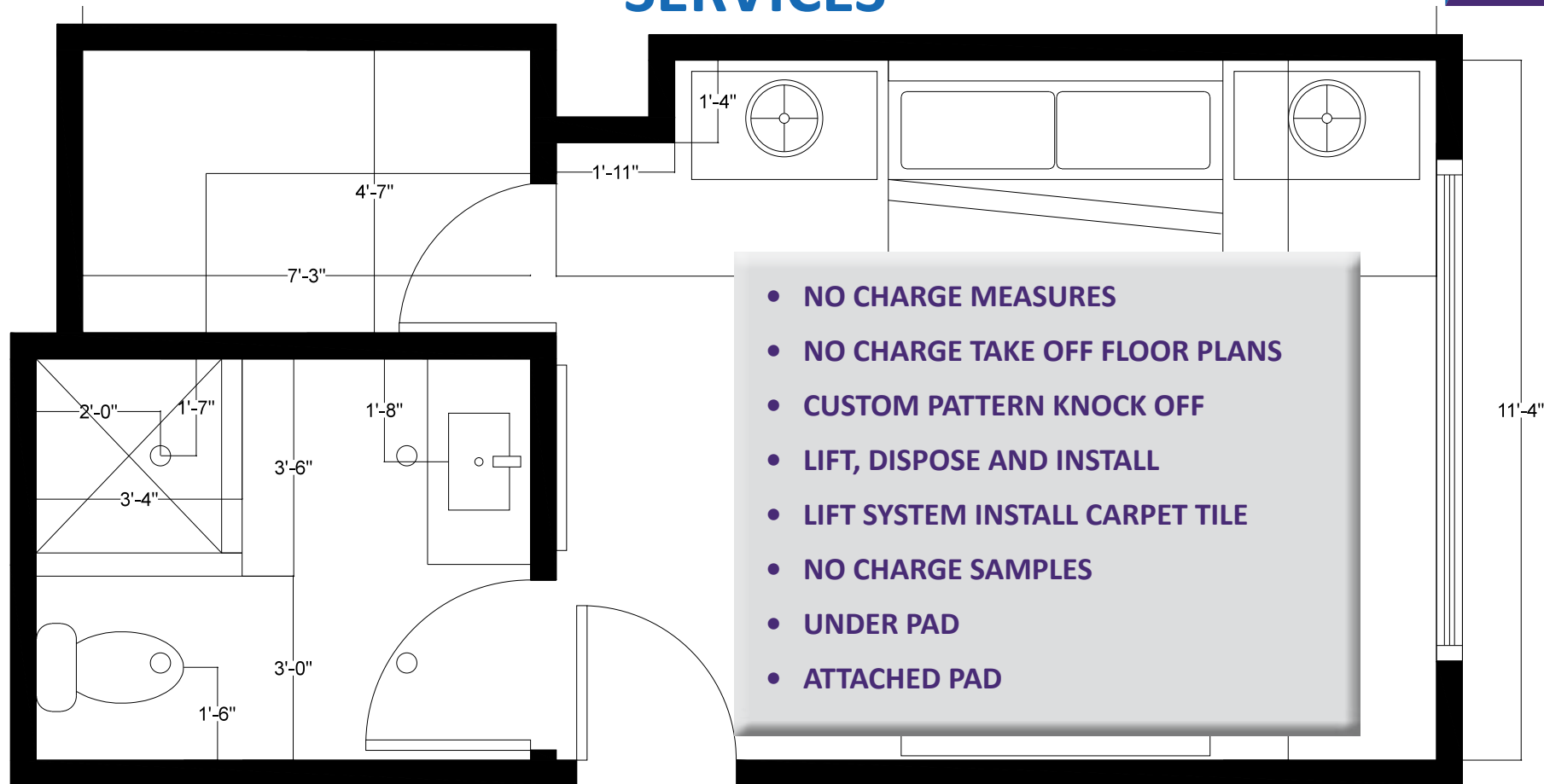


**Summit International** is the leading provider in Canada of flooring solutions. We offer a full range of products, always raising the bar when it comes to marketing the very best in the industry. We provide products available for a variety of applications, factory pre-glued or glue-less, and with original designs and patterns.

Summit also offers a complete selection of flooring products, such as natural cork, conventional and engineered hardwood, ceramic and PVC tiles. All products are manufactured to exceed the highest quality standards. The pride and workmanship we hold in our products are a reflection of our non-stop dedication to quality and excellence. Samples can be provided upon request.



# SERVICES



- NO CHARGE MEASURES
- NO CHARGE TAKE OFF FLOOR PLANS
- CUSTOM PATTERN KNOCK OFF
- LIFT, DISPOSE AND INSTALL
- LIFT SYSTEM INSTALL CARPET TILE
- NO CHARGE SAMPLES
- UNDER PAD
- ATTACHED PAD



# SHOWROOM

Feel free to visit our showroom where you can view hundreds of samples, from High End Woven Polypropylene to New Zealand Wool, Solid Hardwood to Luxury Vinyl Tile. We also have a large inventory of architectural folders and cut samples to take with you. Open 9:00 am to 5:00 pm Monday to Friday and located just off the 401 in Pickering. Our staff will gladly help you find the right flooring for your project.



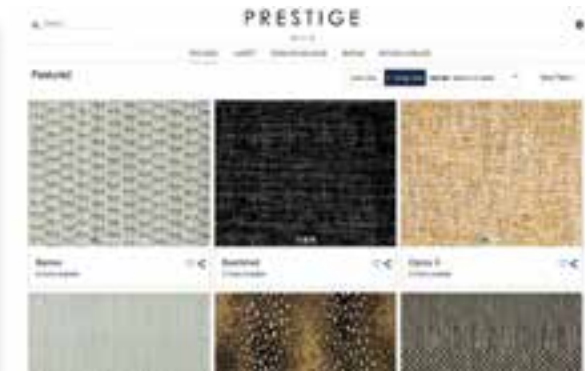
*Tuxtex*  
of California



*Masland*  
CARPETS & RUGS

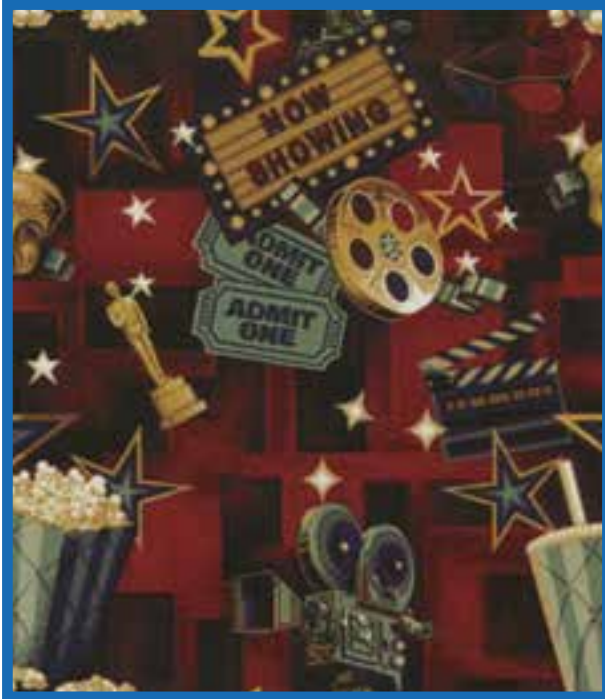


# SUMMIT INTERNATIONAL HAS A WIDE VARIETY OF PARTNERSHIPS WITH HAND PICKED SUPPLIERS

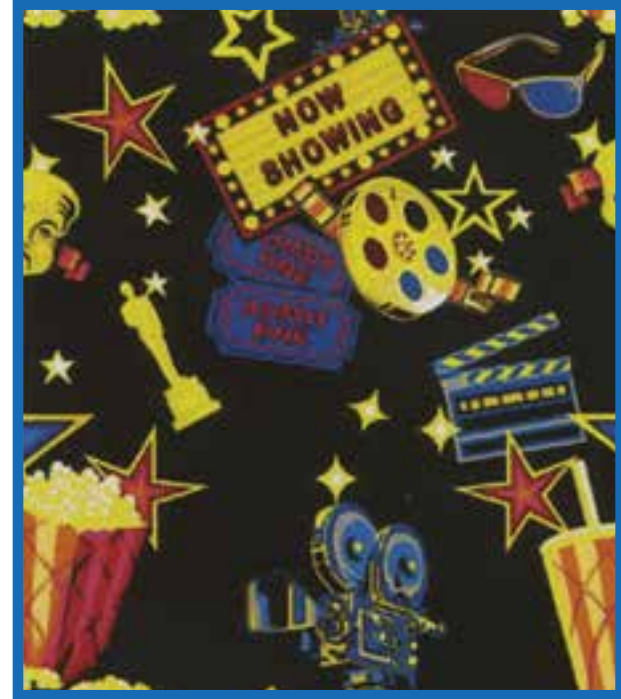


# CINEMA

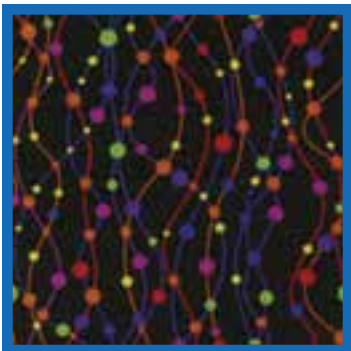
3027R100



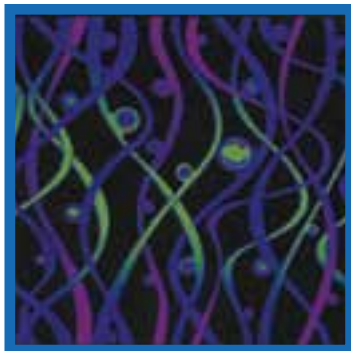
3027R300



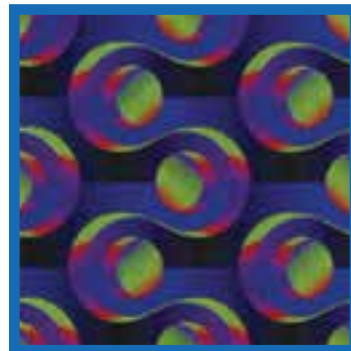
# GLOW COLLECTION



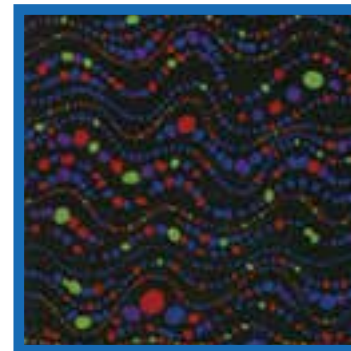
826-001



693-004



667-007



824-001



904-002



825-001



649-002



669-001

# STEP ON IT - Running Line Stock



CIRCUIT - BRICKYARD



FINISHLINE - INDY GO



IMPACT - LIGHTNING



SPRINT - OFF ROAD



VELOCITY - SMOKE



CIRCUIT - VROOM!

# ESSENCE COLLECTION - Running Line Stock



Pattern: Due Course  
Color: Moment in Thyme



Pattern: Ebb & Flow  
Color: Bedtime Blues



Pattern: Give It Time  
Color: Golden Ages



Pattern: Hour Glass  
Color: Scarlet O'Erta



Pattern: Stitch in Time  
Color: Afternoon Coffee



Pattern: Sun Dial  
Color: Black Friday

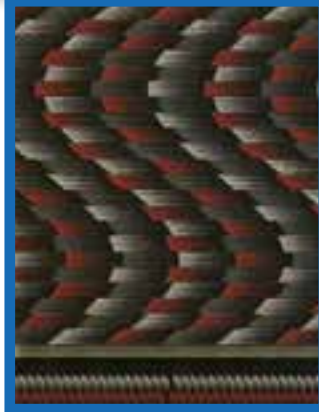
# CUSTOM DESIGN CO-ORDINATING BORDERS & PATTERNS



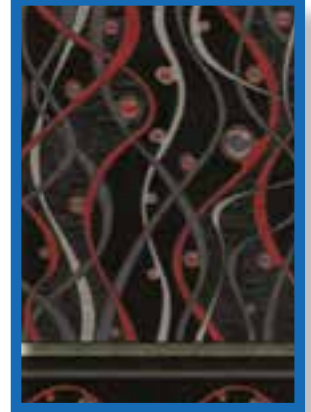
800-001



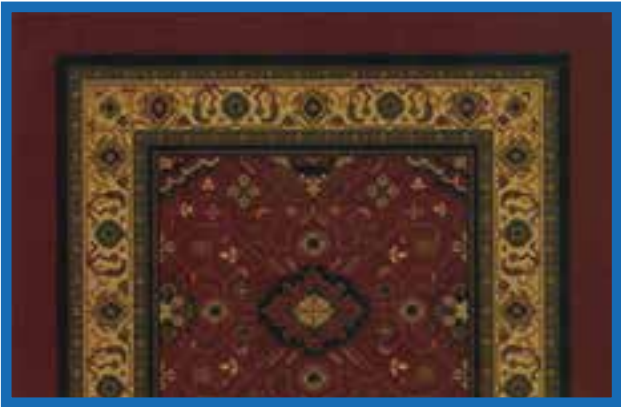
688B-002



805-001



693-002



CORRIDOR • 3019R200



3021R200 • DIAMOND



3022R200 • FILL



3024R200 • SMALL

# TRADESHOWS

Precise cuts made to standard booth sizes (i.e. 10' x 10') or customer requirements.  
Broadloom, Carpet Tile, Vinyl Plank etc.  
Underpad  
Custom designs  
Pre-show floor protection (Carpet/Hardsurface)



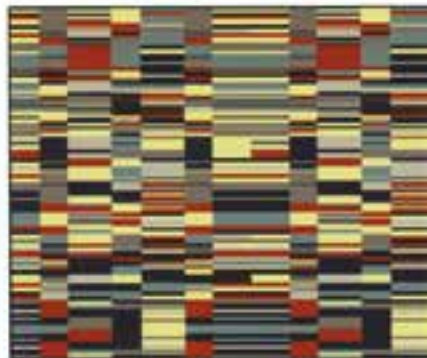
# FROM DESIGN TO COMPLETION

Summit International's superior service will guide you from design, selecting styles and colours to creating a custom sample and delivering your finished product. If required, we have professional installers to complete your project.

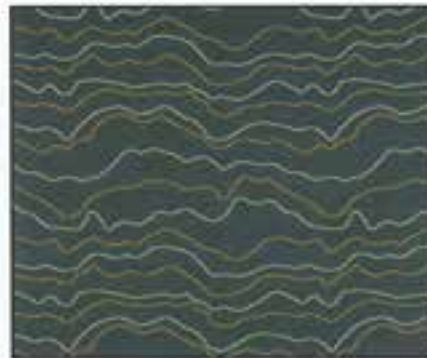




Pattern: C550  
Pattern Repeat:  
81" x 81"



Pattern: C618  
Pattern Repeat:  
80" x 128"



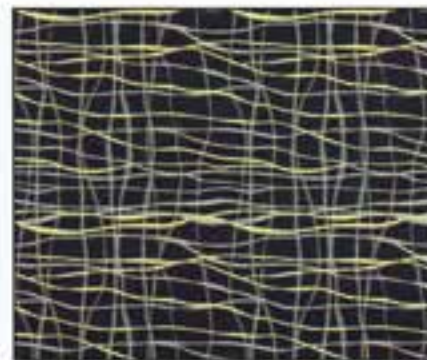
Pattern: C448D  
Pattern Repeat:  
90" x 72"



Pattern: C371  
Pattern Repeat:  
36" x 72"

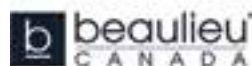


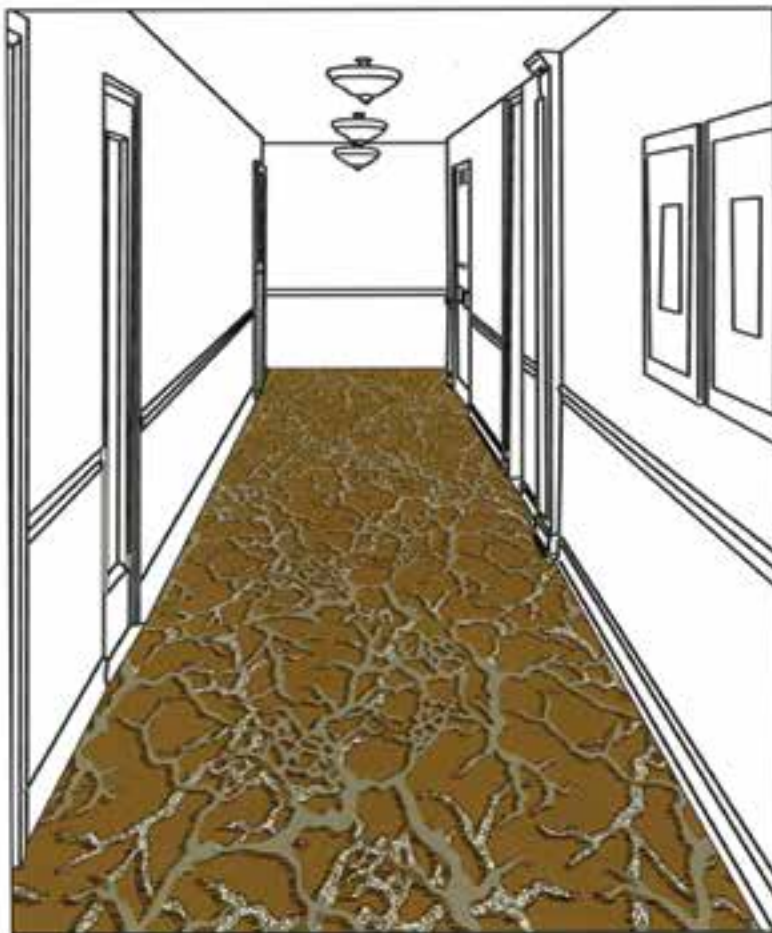
Pattern: C544  
Pattern Repeat:  
72" x 72"



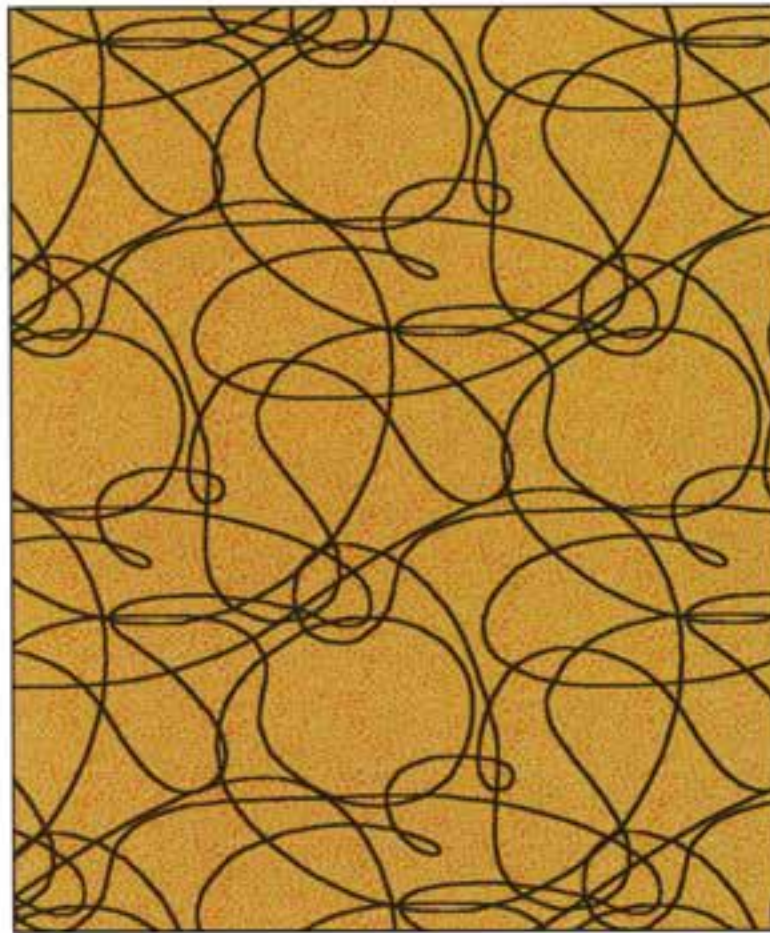
Pattern: C373  
Pattern Repeat:  
72" x 72"







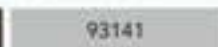
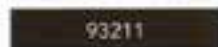
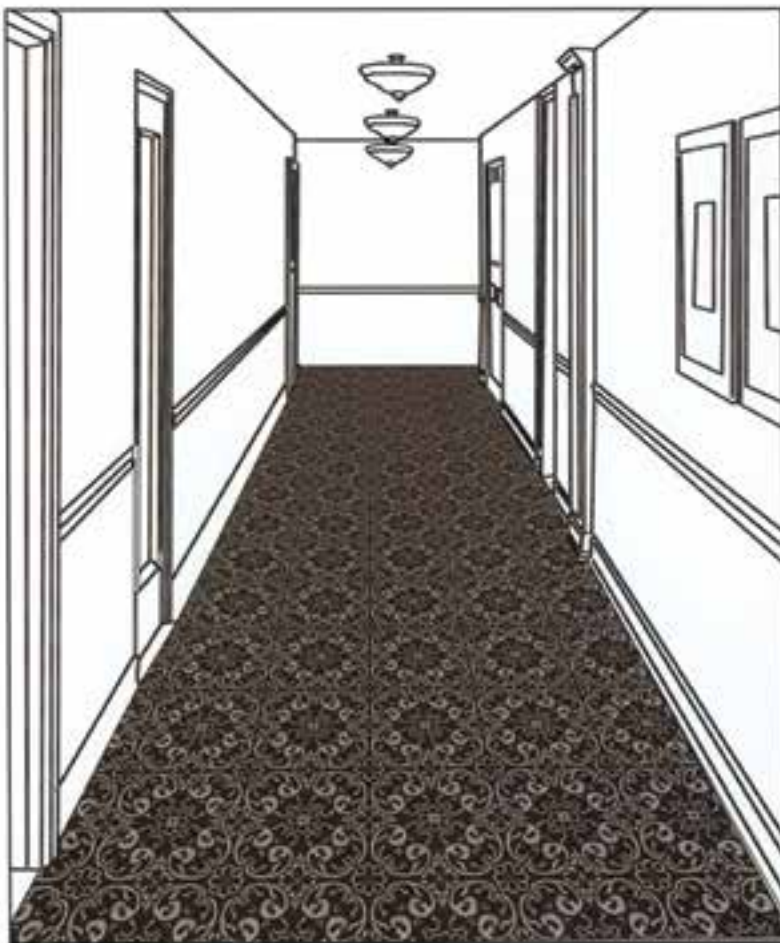
Pattern : C607  
Pattern Repeat:  
116" x 140"



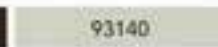
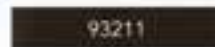
Pattern : C358  
Pattern Repeat:  
72" x 72"



Pattern: C449  
Pattern Repeat:  
96" x 132"



Pattern: X1180  
Pattern Repeat:  
18" x 18"



Pattern: X4755S  
Pattern Repeat:  
18" x 19"



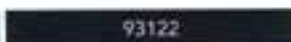
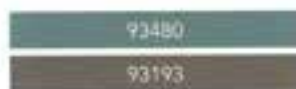
Pattern: D1433  
Pattern Repeat:  
294" x 390"

93191	93105
93750	93413
93400	93388



Pattern: D1409  
Pattern Repeat:  
96" x 90"

93191	93225
93105	93400
93002	



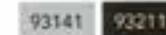
Pattern: C596  
Pattern Repeat: 180" x 216"



Pattern: X4681S  
Pattern Repeat: 48" x 48"



Pattern: X2445A  
Pattern Repeat:  
24" x 24"



Pattern: X3984S  
Pattern Repeat:  
24" x 24"

- **Protect For Carpet**
- **Finished Floor Guard**
- **WR Floor Guard**
- **Protect Runner**
- **Rosin Paper**
- **WR Hardboard**
- **Protect CP Board**
- **Polycraft Mask**
- **Traffic Guard**
- **Tacky Mat**
- **Multi-Use Red**
- **Protect Clip & Snap**
- **EZ Prop**
- **Door Shield**
- **Jamb Protector**
- **Corner Guard**
- **Liquid Mask**
- **Window Film**
- **Shoe Booties**
- **Protect Pro Vent**
- **Vinyl Tape**
- **14 Day Painters Tape**
- **Safety Rail System**

**Summit/Protect** is a leader in providing temporary surface protection to the Renovation/Construction Industry.

We carry a wide variety of products to protect everything from Hardwood Floors, Carpets, Cabinets & Counter tops, Bathtubs etc. Our expertise and emphasis on Service has provided our customers to rely on us to ensure their Projects are not delayed by untimely repairs or replacement of expensive surfaces.

We are the exclusive Canadian Distributor of Protect Products, we provide our customers with rapid shipping across Canada.

**PROTECT** *ii*  
ASSOCIATES, INC  
**THE SURFACE PROTECTION CENTER**



**BROCHURES  
& SAMPLES  
AVAILABLE**





**Summit International** leads the way with its pioneering approach to stain and odour removal. The innovative bio-enzymatic technology is far more effective than traditional chemical methods for the removal of organic stains and odours, yet safe for materials, humans, and the environment.



#### WHO SELLS URINE-OFF?

- Carpet Dealers
- Carpet Cleaners
- Pet Stores
- Groomers
- Rug Dealers
- Vacuum Dealers
- Janitorial Supply Stores



## RESIDENTIAL

Urine-Off Removes;  
Urine, Feces, Vomit, Blood, Pet Stains,  
Sweat Stains, Bodily Fluids, Wine, Coffee,  
Food Stains, Organic Matter, etc.



## COMMERCIAL



### PRODUCTS:

- Multi-Purpose
- Bathroom Cleaner
- Multi-Pet
- Blood Remover
- Smoke Odour Eliminator
- Organic Odour Eliminator
- Laundry Pre-Treat
- Black Lights
- Absorbent Powder
- Absorbent Sheets
- Carpet Injectors
- Wine Off
- Coffee-Off
- Power Trigger Sprayers
- Multi-Purpose Formula

**Summit International, Canada - 1750 Plummer Street, Units 9 & 10 - Pickering, ON L1W 3L7**  
**Phone: 905-420-7574 - Toll Free: 1-800-461-8103 - Fax: 416-420-3656**

## EMAIL

To place orders, request samples or receive information please use the following email addresses

**Carpet, Hardsurface or Urine-Off**  
business@summitcarpet.com

**Protect**  
protect@summitcarpet.com



# summitcarpet.com

Payment  
We accept cheque, COD, open accounts and major credit cards

Proud members of the following associations



**Summit International, Canada**

**1750 Plummer Street**

**Units 9 & 10**

**Pickering, ON**

**L1W 3L7**